

EAGE



GET 2022

3RD EAGE GLOBAL ENERGY TRANSITION
CONFERENCE & EXHIBITION

7-9 NOVEMBER 2022 • THE HAGUE, THE NETHERLANDS

TECHNICAL PROGRAMME



JOIN US ON SOCIAL MEDIA!

EAGEGET.ORG

Monday 7 November

ROOM 1.1		ROOM 1.2	
08:55	Opening Message - G. Sosio ¹ ¹ SLB		
09:00	Welcome Day 1 - L. Beugelsdijk ¹ ¹ Shell		
09:05	Keynote: Partnering with Society & Policy Makers - J. Schuppers ¹ ¹ European Commission DG Research & Innovation		
09:25	Keynote: CCUS and Role in Energy Transition - A. Tucker ¹ ¹ Shell		
09:45	Panel Discussion: Maintaining a Global License to Operate - Focus on Methane Emissions - L. Beugelsdijk (moderator) ¹ ¹ Shell		
10:45	Coffee Break		
Geoscience and Engineering for the Offshore Wind Industry I Session Chairs: G. Sauvin (Norwegian Geotechnical Institute), M. Vanneste (Norwegian Geotechnical Institute)		Geothermal Potential Evaluation Session Chairs: G. Sosio (SLB), E. Macinnes (CGG)	
11:10	Advanced imaging workflows with 3D seismic exploration data reveal new details for very near surface applications - J. Oukili ¹ , B. Caselitz ¹ , A. McKay ^{1*} , T.K. Karlsen ¹ , J. Beenfeldt ¹ ¹ PGS	11:10	Low salinity Upper Cretaceous formation potential for Geothermal Energy harvesting in the Eastern Ily Basin, Kazakhstan - A. Kozhagulova ¹ , V. Yapiyev ^{1*} , A. Kalitova ² , V. Zavaley ² , A. Dillinger ¹ , A. Karakozhayeva ¹ , T. Yensepbayev ² , J. Holbrook ³ , M. Fustic ¹ ¹ Nazarbayev University; ² Satbayev University; ³ Texas Christian University
11:30	The shallow geology of the southern North Sea and Baltic Sea – relevance for offshore wind - S. Wenau ^{1*} , T. Burmeister ¹ , S. Dodds ¹ , N. Morales ¹ , J. Haberkern ¹ ¹ Fraunhofer Institute for Wind Energy Systems IWES	11:30	Deep Geothermal Potential on the Island of Ireland - K. English ^{1,2,3*} , J.M. English ^{2,3} , R. Dunphy ^{4,5} , S. Blake ⁴ , J. Walsh ^{1,2} , R. Raine ⁶ , N.A. Vafeas ¹ , P. Rodriguez-Salgado ^{1,2} ¹ SFI Irish Research Centre for Applied Geosciences (iCrag); ² University College Dublin (UCD); ³ Stellar Geoscience Ltd.; ⁴ Geological Survey of Ireland (GSI); ⁵ Completions Geoscience Consulting; ⁶ Geological Survey of Northern Ireland (GSNI)
11:50	Towards holistic characterization of the near seabed for renewable energy installations in shallow marine environments - M. Clementi ^{1*} , D. Boiero ¹ , C. Leone ¹ , L. Masnaghetti ¹ ¹ SLB	11:50	Revisiting exploration and resource assessment to unlock deep geothermal energy development by mitigating the risks - M. Garcia ^{2,1*} , A. Dourfaye ^{2,3} , A. Rabaute ^{2,4} , L. Bertrand ⁵ , S. Boutareaud ⁶ , J. Ferran ⁷ , S. Hautot ⁸ , S. Revillon ⁹ ¹ KIDOVA; ² GEOTREF Venture; ³ Gounti Yena Energies; ⁴ GeoSubSight; ⁵ Enerex; ⁶ Geo3Conseil; ⁷ GeoLinks; ⁸ IMAGIR; ⁹ Sedisor
12:10	Integrating high-resolution seismic inversion with geotechnical data to assess subsurface soil profile in offshore wind farms - K. Havelia ¹ , S. Manral ¹ , S. Tilley ¹ , S. Freeman ¹ , S. Kriplani ^{1*} ¹ SLB	12:10	Geothermal Rapid Screening - A. Parent ^{1*} , C. Vogt ¹ , C. Bonomi ² , T. Fuchs ¹ , R. Schulze-Riegert ³ , F. Krzikalla ⁴ , M. Carles ² , B. Lipinski ¹ ¹ SLB Aachen Technology Center; ² SLB-Riboud Product Center; ³ SLB Norwegian Technology Center; ⁴ SLB Abingdon Technology Center
12:30	Lunch		
Assessment, Mitigation and Remediation of Subsurface Risks Session Chairs: B. Dewever (Shell Upstream), J.M. Gonzalez Muñoz (REPSOL EXPLORATION)		Environmental Sustainability I Session Chair: E. Caslin (iCrag (Irish Centre for Research in Applied Geosciences))	
13:10	Developing operating principles for safe CO2 injection in depleted gas fields – a flow assurance perspective - W. Schiferli ^{1*} , T. Huijskes ¹ ¹ EBN B.V.	13:10	Redefining the Landscape of Net Zero: Assessing Land Suitability for Present and Future Climates - K. Bajpai ^{1*} , A. Smith ¹ , P. Roy ¹ ¹ CGG
13:30	From conventional acquisition to UHR image using FWI in the Barents Sea - I. Espin ^{1*} , N. Salaun ¹ , H. Jiang ¹ ¹ CGG	13:30	Transition from liquid hydrocarbons to non fossil materials / lack of produced and discovered volumes - J. Biseau ^{1*} ¹ Retired from TotalEnergies
13:50	Implications of Near-Wellbore Phenomena during CO2 injection in Depleted Gas Fields - T. Huijskes ^{1*} , W. Schiferli ¹ ¹ EBN B.V.	13:50	Application of anaerobic digestion for biogas and methane production from fresh beach-cast biomass - J. Burlakovs ^{1*} , Z. Vincevica-Gaile ¹ , V. Bisters ¹ , W. Hogland ² , M. Kriipsalu ³ , I. Zekker ⁴ , R.H. Setyobudi ⁵ , Y. Jani ⁶ , O. Anne ⁷ ¹ University of Latvia; ² Linnaeus University; ³ Estonian University of Life Sciences; ⁴ Tartu University; ⁵ University of Muhammadiyah Malang; ⁶ Malmö University; ⁷ Klaipeda University
14:10	Geological conditions for offshore wind turbine foundations at the Sørlige Nordsjø II site, Norwegian North Sea - H. Petrie ^{1*} , C. Eide ¹ , H. Haflidason ¹ , T. Watton ² ¹ University of Bergen; ² Equinor Energy AS		



GET2022

INFORMATION IS ACCURATE AS OF 7 NOVEMBER 2022

Monday 7 November

ROOM 1.1		ROOM 1.2	
Solutions & Society Session Chairs: G.S. Schultz (EPI Group), T. Rudolph (Technische Hochschule Georg Agricola)		Cross-Uses I Session Chairs: M. Haas (SLB), K.L. English (University College Dublin)	
14:30	Effects of fossil fuel dependency and economic shocks on renewable energy evolution - I. Tishchenko ^{1*} ¹ OMV Exploration & Production GmbH	14:30	Unlocking Insights for the Energy Transition: Predicting Geothermal Energy Potential Using Scientific Data and Spatial Analytics - S. Merten ^{1*} , J. Skero ² , J. Flinch ³ ¹ Elsevier B.V.; ² Elsevier Inc.; ³ Consultant for Elsevier
14:50	Oil and gas skills to low-carbon technologies - S. López Kovács ^{1*} , G. Walker ¹ ¹ Repsol Exploracion	14:50	Characterizing subsurface geology: critical for the energy transition - A. Davies ¹ , L. Cowliff ¹ , E. Kozlowski ¹ , M. Simmons ^{1*} ¹ Halliburton
15:10	Monitoring Ground Movement – The big jigsaw of the cavern gas-storage Epe, Germany - T. Rudolph ^{1*} , P. Goerke-Mallet ¹ , M. Poplawski ¹ , A. Mütterthies ² , S. Teuwsen ² , C. Yang ² ¹ Technische Hochschule Georg Agricola - Research Center of Post-Mining; ² EFTAS Fernerkundung Technologietransfer GmbH	15:10	Data Driven Reservoir Screening and Ranking for CCUS in the Gulf of Mexico Region - F. Olowu ¹ , R. Gadrboh ^{1*} ¹ CGG
15:30	Coffee Break		
Dedicated Session			
15:55	Navigating Career Challenges & Opportunities for the Energy Transition - E. Bloem (Norwegian Institute of Bioeconomy Research), L. Levato (LUSVAL), G. Michaud (GM Consulting)		
17:15	Icebreaker Reception		
19:15	End of Day 1		



Tuesday 8 November

ROOM 1.1		ROOM 1.2	
09:00	Welcome Day 2 - T. Rudolph ¹ ¹ TH Georg Agricola		
09:05	Keynote: Impact of Policy on Geosciences & Engineering - E. Miranda-Barbosa ¹ ¹ Svåheia Eiendom AS		
09:25	Keynote: The Importance of Sustainability Criteria for the Development of Geoengineers - P. Goerke-Mallet ¹ ¹ TH Georg Agricola		
09:45	Panel Discussion: Geosciences and the Pathway to Net Zero: How Geoscience Helps to Achieve an Ambitious Global Goal - T. Rudolph (moderator) ¹ ¹ TH Georg Agricola		
10:45	Coffee Break		
Exploration and Geographical Mapping of CO₂ Storage Resources Session Chairs: J. Robinson (Chevron), M. Branston (SLB)		Hydrogen and Heat Storage Potential Session Chairs: K.D. de Borst (Shell Global Solutions International), N. Salaun (CGG)	
11:30	Geological data and tools for basin-scale screening of CO₂ storage potential - Northern North Sea - G. Duval ^{1*} , M. Booth ¹ , R. Porjesz ¹ , S. Otto ¹ , P. Park ¹ , C. Olivares ¹ , A. Satterley ¹ , S. Calvert ¹ , A. Abukarova ¹ , L. Polyakova ¹ , A. Khalid ¹ , M. Nassir ¹ ¹ CGG	11:30	An assessment of hydrogen storage potential in porous media in Europe – Results from Hystories Project - Y. Le Gallo ^{1*} , C. Vincent ^{2,3} ¹ Geostock; ² CO2GEONET; ³ British Geological Survey
11:50	Efficient Integrated G&G workflow for CO₂ site characterization - C. Reiser ^{1*} , N. Pernin ¹ , N. Lee ¹ , B. Durot ² ¹ PGS; ² Eliis	11:50	Challenges and opportunities for underground storage in salt caverns of the Norwegian North Sea - D. Marín ^{1*} , A. Escalona ¹ , N. Cardozo ¹ ¹ University of Stavanger
12:10	Regional screening for carbon storage opportunities in the UK Southern North Sea - R. Hamilton ^{1*} , D. Barlass ¹ , C. Abu ¹ , S. Head ¹ ¹ SLB	12:10	A Case Study to Investigate Free Heating Potential of BTES Systems - E. Ekmekci ^{1*} , M. Aydin ² , Z.F. Ozturk ¹ , A. Sisman ³ ¹ Istanbul Technical University; ² University of Kiel; ³ Uppsala University
12:30	Lunch		



GET2022

INFORMATION IS ACCURATE AS OF 7 NOVEMBER 2022

FOYER

Poster Session 1

13:10	Using Forward Stratigraphic Modeling with Machine Learning Property Modeling for Site Characterization of Offshore Wind Farms - A. Ahmad ¹ , K. Eder ^{1*} , A. Campana ¹ , S. Thum ¹ ¹ SLB
	Characterization of a carbonate geothermal reservoir by the inversion of seismic reflection amplitudes - A. Emad Nageh Masri ^{1*} , E. Takács ^{1,2} ¹ University of Miskolc; ² Supervisory Authority for Regulatory Affairs
	Passing Drilling Optimization and Cost Reduction Methods to Deep Geothermal Drilling in the Relay race Ahead - V. Daneshkhah ^{1*} , G. Younesi ¹ , E. Daneshkhah ¹ , K. Ahmadpour ¹ , H. Mehdikhani ¹ ¹ Dana Energy
	Leveraging subsurface data in the context of the Energy Transition - F. Marfella ¹ , C. Sanasi ^{1*} , M. Dalla Rosa ¹ , D. Mezzapesa ¹ , E. Gentile ¹ ¹ Eni Spa
	Using a Self-Growing Neural Network approach to CCS Monitoring - C. Msika ¹ , R. Findlay ^{1*} ¹ AspenTech
	4D Facies Inversion for CCS Monitoring - J. Neep ^{1*} , J. Gallop ² , K. Koryakova ¹ ¹ Ikon Science Ltd; ² Ikon Science Americas
	Efficiency of temporary CO2 storage in saline aquifers - N. Andrianov ^{1*} ¹ Geological Survey Of Denmark And Greenland (geus)
	Geostorage potential in offshore Ireland - K. English ^{1,2,3*} , J.M. English ^{2,3} ¹ SFI Irish Research Centre for Applied Geosciences (iCRAG); ² University College Dublin (UCD); ³ Stellar Geoscience Ltd.
	CO2 detection and monitoring at the Svelvik CO2 Field Lab - M. Jordan ¹ , S. Halvorsen ^{1,2} , G. De Jaeger ¹ , C. Ringstad ^{1*} ¹ SINTEF; ² NTNU
	Required capabilities for assessing depleted and deep saline reservoirs for successful CCS-projects - H.J. Kloosterman ^{1*} , A. Kirchin ¹ ¹ RPS Energy
	Physics informed neural networks based on sequential training for CO2 utilization and storage in subsurface reservoir - K. Mansour Pour ^{1*} ¹ Delft University Of Technology

ROOM 1.1

Geological Storage Characterization and CO2 Storage Resource Estimation I

Session Chairs: B. Dewever (Shell Upstream), J.M. Gonzalez Muñoz (REPSOL EXPLORATION)

ROOM 1.2

Dual Play Opportunities for Geothermal Energy Production

Session Chair: G. Sosio (SLB)

13:50	Numerical Assessment of Halite Precipitation Impact on Cyclic CO2 Injection into Saline Aquifers - Y. Barreto ^{1,2*} , P. Kowollik ¹ , O. Burachok ¹ , H. Alkan ³ , B. Jenei ² ¹ Wintershall Dea; ² TU Clausthal; ³ TU Bergakademie Freiberg	13:50	De-risking salar & paleosalar lithium-brine rich targets in the Lithium Triangle using satellite imagery - M. Broadley ¹ , A. Baines ^{1*} , J. Gines ¹ , L. Rhind ¹ ¹ CGG
14:10	CO2 Full field Thermo-Hydro-Mechanical modeling in depleted gas field: a numerical approach to assess injection feasibility - G.L.D. Facchi ^{1*} , A.E.M. Sadek ¹ , F. Marton ¹ ¹ Eni Spa	14:10	Geothermal Power Generation from Hydrocarbon Wells – A Summary of Opportunities and Practical Guidance - L. Lewis ^{1*} , L. Hackett ¹ , M. Tran ¹ ¹ GeothermEx, A SLB Company
14:30	Simulation Digital Tool: Sensitivity Analysis to Critical Storage Coefficients - M. Garcia Gomez ^{1*} , J.M. González Muñoz ¹ , M.A. Trenado Bustos ¹ ¹ Repsol Exploration & Production	14:30	Geothermal Lithium: Screening Tool for Responsibly Extracted Critical Elements - R. Bolton ^{1*} , E. Bunker ¹ , R. Crossley ¹ , G. Rhodes ¹ , E. Drumm ¹ ¹ CGG
		14:50	Sustainability of geothermal energy: handling co-produced gas - D. Van Nimwegen ¹ , J. Van 't Westende ^{1*} , P. Shoeibi-Omrani ¹ , D. Dinkelman ² , E. Peters ² ¹ TNO, Heat Transfer and Fluid Dynamics; ² TNO, Applied Geosciences

Tuesday 8 November

FOYER

Poster Session 2 / Extended Coffee Break

15:10	Lessons Learned from Carbon Capture Storage (CCS) subsurface characterization: Velocity modeling methodology applied to the CCS - M.A. Trenado Bustos ^{1*} , J.M. González Muñoz ¹ , M. García Gómez ¹ ¹ Repsol
	Conversion of underground gas storages to hydrogen: Impact on storage integrity, capacity and deliverability - C.T. Lüddecke ^{1*} , B. Hagemann ¹ , L. Ganzer ¹ ¹ Clausthal University Of Technology
	Carbon Storage Project Management: lessons learned from agile visualization phase. - J.M. Gonzalez Muñoz ^{1*} , M. García Gómez ¹ , A. Trenado Bustos ¹ , J. Canal ² , E. Lopez ² , S. Rodriguez ³ , J. Alvarellós ² , J.m. Segura ² , N. Ordonez ¹ ¹ Repsol Exploration; ² Repsol Technology Lab; ³ Independent
	Overview of Energy Transition Projects to Reduce Carbon Footprint in South Sumatra, Indonesia - T. Fansuri ^{1*} , H. Haryaputra ¹ , A.T. Suherman ¹ , G. Giyatno ¹ , S. Parsaulian ¹ , A. Amperianto ¹ ¹ Pertamina Hulu Energi
	Repurposing oil and gas wells to geothermal: clean energy to carbon neutral - S. López Kovács ^{1*} , G. Walker ¹ ¹ Repsol Exploracion
	The PYCASSO territories Project: a large onshore CCUS hub for Southern Europe - M. Blaizot ^{2*} , F. Giannangeli ¹ , T. Ait Ettajer ¹ ¹ Repsol; ² Avenia
	Modeling of cyclic deformation of sandstones based on experimental observations - E. Hernandez ^{1*} , M. Naderloo ¹ , K. Ramesh Kumar ¹ , H. Hajibeygi ¹ , A. Barnhoorn ¹ ¹ Faculty of Civil engineering and Geosciences, Delft University of Technology
	Artificial Intelligence / Machine Learning for Sustainable Utilization of the Subsurface - A. Jahanbani Ghahfarokhi ¹ , C.S.W. Ng ^{1*} , M. Nait Amar ² ¹ NTNU (Norwegian University of Science and Technology); ² Sonatrach
	Differences between acoustic and elastic waveforms for an offshore CO2 storage setting - J. Park ^{1*} , M. Vanneste ¹ , G. Sauvin ¹ , J. Dujardin ¹ , H. Marin-Moreno ¹ ¹ NGI
	A preliminary site characterization of geological carbon storage projects in western nearshore Taiwan - Y. Tseng ^{1*} , C. Ko ¹ , C. Chien ¹ , P. Tseng ¹ , H. Hsu ¹ , T. Shiao ¹ ¹ CPC Corporation

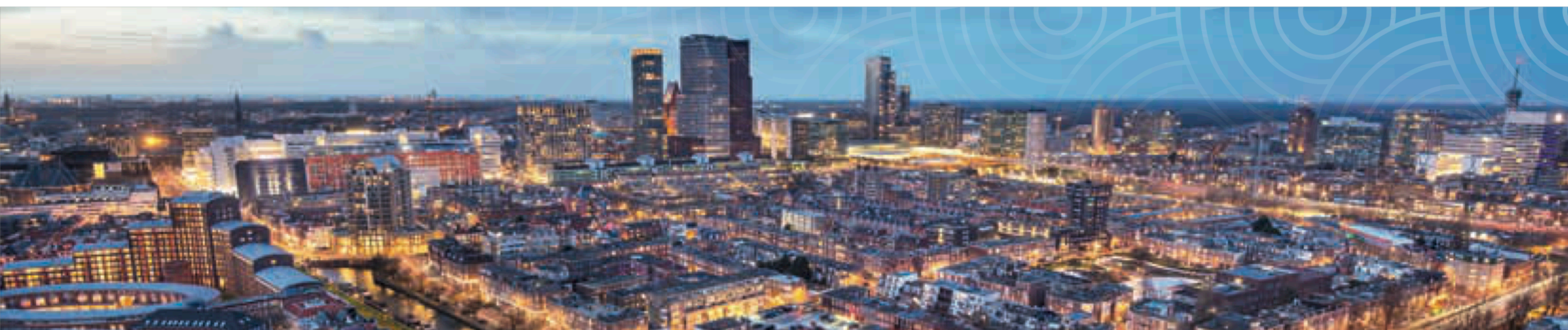


GET2022

INFORMATION IS ACCURATE AS OF 7 NOVEMBER 2022

Tuesday 8 November

ROOM 1.1		ROOM 1.2	
Geothermal Resource Characterisation Session Chairs: J. Biteau (Retired from TotalEnergies), E. Macinnes (CGG)		Hydrogen Storage: Risk Assessment Session Chairs: K.D. de Borst (Shell Global Solutions International), T. Rudolph (Technische Hochschule Georg Agricola)	
15:55	Geothermal-Hydrothermal Modeling of Volcano-Hosted System, Cordillera Central Colombia: Insights for Deep Geothermal Energy Resource Assessment - N. Sánchez ¹ , G. Pérez-Drago ^{2*} , J. Pérez ¹ , A. Negre ² , F. Medellín ² ¹ Ecopetrol-ICP; ² Beicip-Franlab	15:55	Periodic storage of hydrogen in sandstone reservoirs in the Norwegian offshore – geomechanical analysis - M. Suire ² , X. Xie ¹ , P. Cerasi ^{1*} ¹ SINTEF Industry; ² Ecole Polytechnique
16:15	Resolving lateral reservoir properties distribution by seismic inversion for Geothermal exploration - H. Gonzalez ¹ , P. Benitez ^{1*} , L. Hanemaaijer ² , A. Droujinina ³ , M. Leewis ² , P. Dougeris ¹ ¹ Delft Inversion; ² EBN; ³ Former Delft Inversion	16:15	Simulation of Freshwater Injection to Enable Underground Bio-Methanation in High-Saline Gas Storage Formations - S. Hogeweg ^{1*} , B. Hagemann ¹ , L. Ganzer ¹ ¹ Clausthal University of Technology
16:35	On the importance of nearshore extension of MT arrays for geothermal exploration of coastal geothermal systems. - P. Tarits ^{1*} , S. Hautot ² , J. D’Eu ³ , P. Wawrzyniak ⁴ , F. Bretaudeau ⁴ , S. Védrine ⁴ , M. Damet ⁴ , A. Stopin ⁴ ¹ UBO/IUEM; ² IMAGIR Sarl; ³ Mappem Geophysics Sas; ⁴ BRGM	16:35	Numerical analysis of bio-methanation process during underground hydrogen storage - G. Wang ^{1*} , G. Pickup ¹ , K. Sorbie ¹ , E. Mackay ¹ ¹ Heriot-Watt University
		16:55	CO2 geochemical impact evaluation for CCS in depleted gas reservoirs; a comprehensive numerical modeling approach - E.I. Cojocariu ^{1*} , S. Ricci ¹ , A.M.S. Elgendy ¹ , G.L.D. Facchi ¹ , C. Geloni ¹ ¹ Eni S.p.A.
19:00	Cultural Evening		
22:00	End of Day 2		



Wednesday 9 November

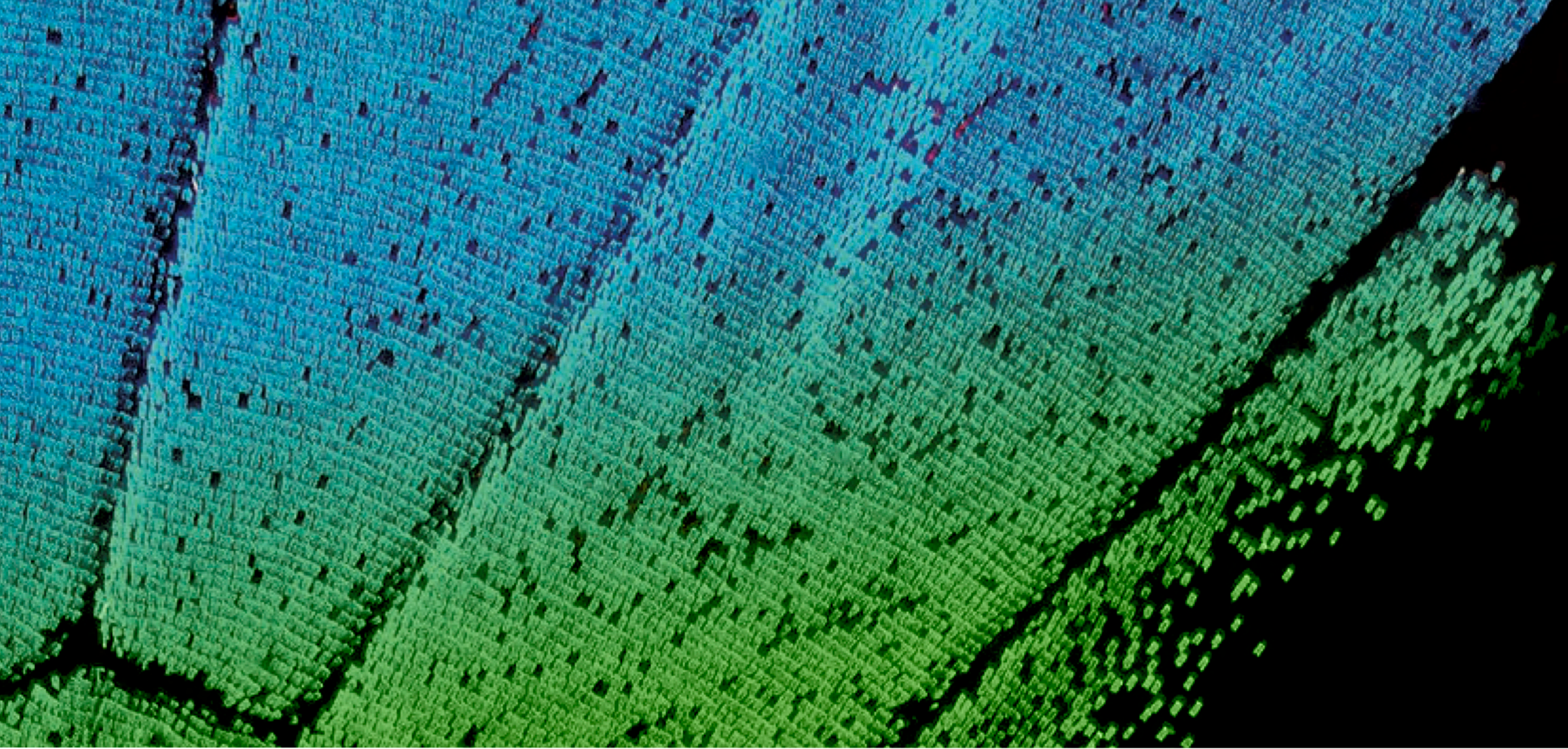
ROOM 1.1		ROOM 1.2	
09:00	Welcome Day 3 - G. Sosio ¹ ¹ SLB		
09:05	Keynote: European Funding & Financial Instruments - A. Eberspächer ¹ , G. Huismans ¹ ¹ RVO		
09:25	Keynote: How to Use Experiences and Skills of the O&G Industry to Foster Ecological Transition? The Example of AVENIA - M. Blaizot ¹ ¹ Pôle Avenia		
09:45	Panel Discussion: Grow up the Transition: How does the Industry Address the Challenges to Scale up Energy Transition Technologies? - G. Burridge (moderator) ¹ ¹ European Federation of Geologists		
10:45	Coffee Break		
Geoscience and Engineering for the Offshore Wind Industry II Session Chairs: M. Vanneste (Norwegian Geotechnical Institute), M. Haas (SLB)		Geological Storage Characterization and CO2 Storage Resource Estimation II Session Chairs: H.J. Kloosterman (RPS Energy), J.M. Gonzalez Muñoz (REPSOL EXPLORATION)	
11:10	Improving subsurface investigations with acoustic impedance inversion: Concept and example from the German North Sea - N. Römer-Stange ^{1*} , A. Werpup Oguro ² , C. Ramos Córdova ² , V. Spieß ¹ ¹ Department of Geosciences, University of Bremen; ² Fraunhofer Institute for Wind Energy Systems (IWES)	11:10	Effect of residual oil saturation on CO2 injectivity-A case study from Nini West Depleted Oil Field - S. Mohammadkhani ^{1*} , W.F. Al-Masri ¹ , D. Olsen ¹ ¹ GEUS
11:30	State-of-the-art ground model development for Offshore Renewables – TNW case study - G. Sauvin ^{1*} , M. Vardy ² , R.T. Klinkvort ¹ , M. Vanneste ¹ , C.F. Forsberg ¹ , A. Kort ¹ ¹ NGI (Norwegian Geotechnical Institute); ² Sand Geophysics	11:30	Estimating saline aquifer CO2 storage resource in data lean regions - C. Gravestock ¹ , J. Jennings ¹ , M. Simmons ^{1*} ¹ Halliburton
11:50	Prediction and probability estimation of geotechnical parameters for offshore windfarm site characterization using geostatistical simulation - L. Siemann ^{1*} , N. Morales ¹ , J.M. Chautru ² , T. Pein ¹ ¹ Fraunhofer IWES; ² Geovariances	11:50	Seismic characterization of the Smeaheia fault block in the context of CO2 sequestration - J. Chin ^{1,2*} , S. Philit ¹ ¹ Vrije Universiteit Amsterdam; ² Eliis
12:10	Accelerating geotechnical soil characterization in offshore wind-farm sites via semi-supervised learning - H. Di ^{1*} , A. Abubakar ¹ ¹ SLB	12:10	Modelling CO2 sequestration in giant aquifer: from basin simulation to dynamic simulation - E. Perfetti ^{1*} , B. Decroux ¹ , M. Lantoine ¹ ¹ Beicip-franlab
12:30	Lunch		
Integration of Traditional and Novel Energy Systems Session Chair: J. Biteau (Retired from TotalEnergies)		Monitoring Technologies for CCS Session Chairs: M. Branston (SLB), H. Al Khatib (SpotLight)	
13:10	Optimizing production and CO2 Injection using a Physics Embedded Machine Learning workflow. - C. Calad ¹ , J. Rafiee ¹ , P. Sarma ¹ , Y. Zhao ¹ , F. Gutierrez ^{1*} ¹ Tachyus	13:10	Monitoring changes in CO2 reservoirs using Cosmic Ray Muons - T. Crozat ^{1*} , C. Steer ² , L. Thompson ^{2,3} , M. Weekes ^{2,3} ¹ CGG; ² Geoptics; ³ University of Sheffield
13:30	Energy transition, the Norwegian Continental shelf as a sustainable subsurface energy system - A. Escalona ^{1*} , D. Marin ¹ , H. Skjørestad ¹ ¹ University of Stavanger	13:30	Delineate CO2 Plume Bodies by Mapping Subsurface Property Changes from Time-Lapse Seismic Gathers with Deep Learning - S. Phan ^{1*} , W. Hu ¹ , A. Abubakar ¹ ¹ SLB
13:50	How Could Reservoir Engineers Harvest Wind Energy? Practical Parametrization Approaches For Wind Farm Layout Optimization - S.P. Szklarz ² , E. Barros ² , D. Berawala ¹ , B.K. Hegstad ¹ , K.R. Petvipusit ^{1*} ¹ Equinor ASA; ² TNO	13:50	Greensand Focused Seismic Monitoring for Offshore CO2 Pilot Injection - A. Szabados ^{1*} , H. Al Khatib ² , N. Ahmad ³ , K. Dominek ³ , O. Bucharok ⁵ , T. Roth ⁵ , N. Schovsbo ⁴ ¹ Wintershall Dea International GmbH; ² SpotLight SAS; ³ INEOS Energy Denmark; ⁴ GEUS; ⁵ Wintershall Dea AG
		14:10	Applications of surface distributed acoustic sensing for CO2 storage and windfarms: Results from large scale experiment - R. Bachrach ^{1*} , G. Busanello ¹ , A. Sayed ¹ ¹ SLB



Wednesday 9 November

ROOM 1.1		ROOM 1.2	
Environmental Sustainability II		Cross-Uses II Session Chair: R. Bolton (CGG)	
14:30	Integrated Mining Monitoring for Open-pit and Underground Mines - C. Yang ^{1*} , K. Pakzad ¹ , K. Zimmermann ³ , T. Rudolph ² , P. Goerke-Mallet ² , A. Mütterthies ¹ ¹ Eftas Remote Sensing Transfer Of Technology GmbH; ² Research Center of Post-Mining, Technische Hochschule Georg Agricola (THGA); ³ DMT Group	14:30	Improved Understanding of Naturally Fractured Reservoirs Using Data Assimilation - G. Serrao Seabra ^{1,2*} , S. De Hoop ¹ , D. Voskov ^{1,3} , F.C. Vossepoel ¹ ¹ TU Delft, Department of Geoscience and Engineering; ² Petrobras; ³ Energy Resources Engineering, Stanford University
14:50	Critical Metals: Their Role In Global Energy Transition - D. Hall ^{1,2*} ¹ European Green Metals Ltd; ² Fellow Society of Economic Geologists	14:50	Digital Twin - How to understand the post-mining processes - M. Pawlik ^{1,2*} , M. Gellendin ^{2,3} , T. Rudolph ¹ ¹ Technische Hochschule Georg Agricola; ² Technische Universität Bergakademie Freiberg; ³ Geological Survey of North Rhine - Westphalia
15:10	Soil Moisture Estimation of Grassland Using Public Copernicus Satellite Radar Sentinel-1 - C. Yang ^{1*} , S. Mader ¹ , T. Rudolph ² , P. Goerke-Mallet ² , A. Mütterthies ¹ ¹ Eftas Remote Sensing Transfer Of Technology GmbH; ² Research Center of Post-Mining, Technische Hochschule Georg Agricola (THGA)	15:10	Monitoring real-time geothermal data leads to innovative Machine Learning improvements in ESP operations and diagnostics - S. Tandazo ^{1*} , H. Hu ¹ , F. Corredor ¹ ¹ Halliburton
15:30	Coffee Break		
Dedicated Session - Closing Discussion			
15:55	Pathways to Net Zero - What have We Learnt?		
16:55	End of the Day 3		





EUROPE OFFICE
+31 88 995 5055
EAGE@EAGE.ORG

MIDDLE EAST/AFRICA OFFICE
+971 4 369 3897
MIDDLE_EAST@EAGE.ORG

ASIA PACIFIC OFFICE
+60 3 272 20140
ASIAPACIFIC@EAGE.ORG

AMERICAS OFFICE
+57 310 8610709
AMERICAS@EAGE.ORG

HEAD OFFICE - KOSTERIJLAND 48 - 3981 AJ BUNNIK - THE NETHERLANDS - +31 88 995 5055 - EAGE@EAGE.ORG



JOIN US ON SOCIAL MEDIA!